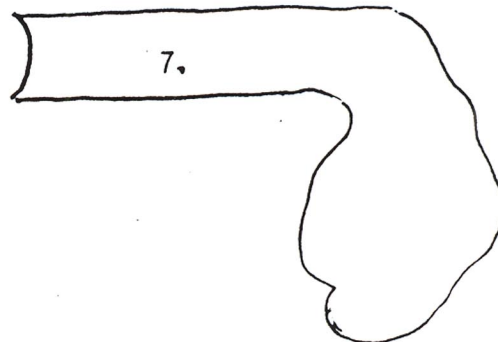
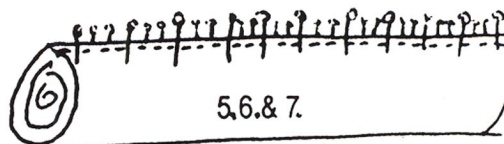
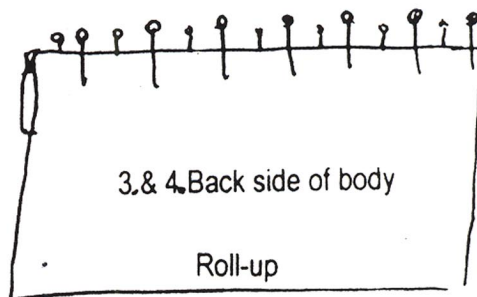
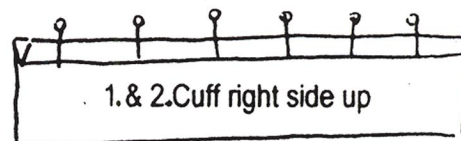


PILLOW CASE PATTERN—The Burrito Method

1/3 yard cuff
1/8 yard trim
3/4 yard body

1. This method eliminates all raw edges. Cut selvage edges off all pieces. Lay out cuff right side up.
2. Fold and press trim piece in half lengthwise, one inch by width of fabric. Place raw edges on the top long edge of the cuff. Pin or machine baste if working with children.
3. Press crease out of body fabric and place right side down on top of the trim and cuff – raw edges even. (four layers of raw edges) Pin or baste.
4. Pin every 3 inches.
5. Roll body tightly toward pins. Stop a couple inches below the top edge.
6. Bring lower edge of cuff up even with pinned edge, enclosing the rolled body, add more pins between those already placed. (five layers)
7. Sew all layers along the pinned edge, using a 1/4" Seam allowance. Remove all pins and turn right side out, through either open end. Press trim toward cuff.
8. Sew the side and end seams, **right side facing out**, using a 1/4" seam allowance. Rotary cut off any threads.
9. Turn the pillowcase right sides together and sew the side and end seams with a 3/8" allowance to create a French seam finish.



Sylvia Dorney for Greenbaum's Quilted Forest, Copyright 2007

